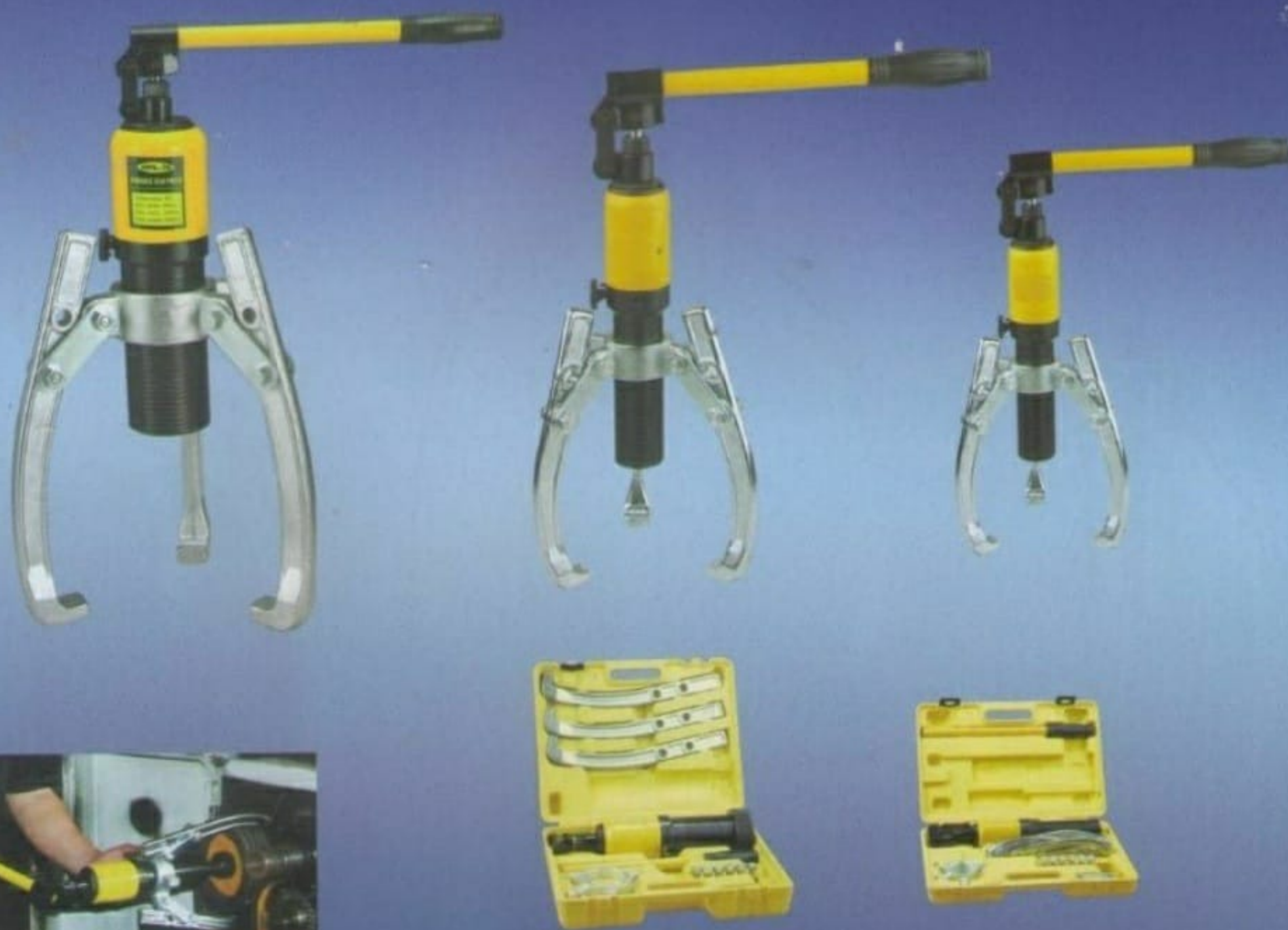


## Hydraulic gear pullers



### Function

▲The integral pullers are compact, lightweight. Easy to carry and operate. It's least restricted by place and is extensively used by factories, repair stations.etc.

▲Both z-jaw and 3-jaw styles are available.

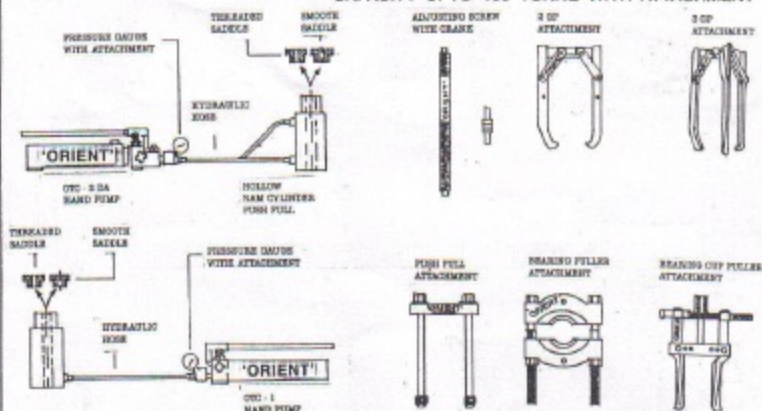
### Technical parameters

Model	HHL-5	HHL-10	HHL-20	HHL-30	HHL-50
Rated output(Ton)	5	10	20	30	50
Spread(mm)	200	250	350	400	500
Reach(mm)	140	170	205	220	250
Max.stroke(mm)	50	60	70	70	60
weight(kg)	7.5	11	19	25	43
Volume(mm)	(1/4)440X380X320	(1/2)440X210X360	430X400X140	480X200X180	520X250X220

# 'Orient'

## HYDRAULIC PULLER-REMOTE CONTROL

CAPACITY UPTO 100 TONNE WITH ATTACHMENT



### A COMPLETE MASTER PULLER SET OF COMPRISING OF THE FOLLOWING ITEMS

FOR OTC/10, OTC/20 & OTC/30 :-

- (1) Hydraulic Pumping Set
- (2) Hollow Ram Cylinder
- (3) Hydraulic Pressure Gauge, upto rated capacity
- (4) Attachment for Hydraulic Pressure Gauge
- (5) High Pressure Flexible Hydraulic Hose two Metres long with end coupling attachments
- (6) Smooth Saddle
- (7) Threaded Saddle
- (8) Adjusting Screw
- (9) Attachment 3 Jaw Grip
- (10) Attachment 2 Jaw Grip
- (11) Push Puller
- (12) Bearing Puller
- (13) Cup Puller.

FOR OTC/50 — Same as above item No. 1 to No. 13, available only.

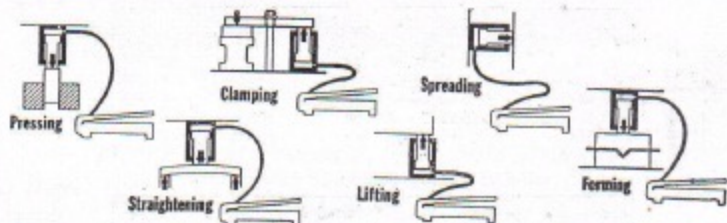
FOR OTC/100 — Same as above item No. 1 to No. 10 available only.

N.B.— Hydraulic Pumping Unit upto OTC/30 will be single Acting—Single Piston type and OTC/50 & OTC/100 Double Acting — Double Piston type.

OPTIONAL :

FOR OTC/50— Cup Puller Attachments.

FOR OTC/100— Push & Bearing Puller Attachments.



## ORIENTAL TRADING CORPORATION

33/1, Netaji Subhas Road (Marshall House) G.P.O. Box No. 2459

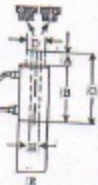
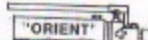
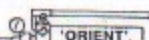
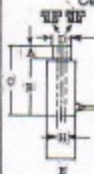
Kolkata - 700 001 • Phone : 220 9759, 220 9557 • Fax : 221 0408

Email : murtaza@cal3.vsnl.net.in

## Industrial Maintenance Puller Sets

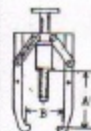
Remote Control, Hydraulic Pullers  
with Centre Hole Ram Cylinder, Pump, Hose & Pressure Gauge, etc.

Puller Type	OTC/10	OTC/20	OTC/30	OTC/50	OTC/100/D
Capacity (Tonne)	10	20	30	50	100
Hydraulic Stroke 'A' mm	75	75	75	100	100
Closed Height 'B' mm	225	240	245	285	285
Extended Height 'C' mm	300	315	320	385	385
Ram Dia 'D' mm	60	63	75	100	153
Body Dia 'E' mm	105	115	145	210	260
Centre Hole Dia 'H' mm	26	32	38	46	76
Centre Screw (BSW)	1"	1 1/8"	1 3/8"	1 3/4"	2"



### ORIENT Grip Puller Attachments : 2 Grip & 3 Grip

Attachment	Use with Hydraulic Unit	Reach 'A' Maximum	Spread 'B' Maximum
2 Grip	OTC/10	180 mm	250 mm
3"	OTC/10	180 mm	300 mm
2"	OTC/20	180 mm	325 mm
3"	OTC/20	180 mm	400 mm
2"	OTC/30	325 mm	500 mm
3"	OTC/30	325 mm	550 mm
2"	OTC/50	390 mm	700 mm
3"	OTC/50	390 mm	800 mm
3"	OTC/100/D	800 mm	1200 mm



### ORIENT Push Puller Attachment

Attachment Code	Use with Hydraulic Unit	Reach 'A'	Spread 'B' Min. Max.	Tired end Thread size 'C'
OPP 10	OTC/10	200 mm*	100 — 250 mm	5/8" UNF
OPP 20	OTC/20	240 mm*	145 — 300 mm	5/8" UNF
OPP 30	OTC/30	240 mm*	175 — 410 mm	1" UNF
OPP 50	OTC/50	340 mm*	215 — 545 mm	1 1/4" NF
OPP 100	OTC/100	625 mm*	300 — 775 mm	1 1/2" NF

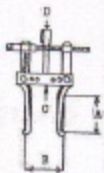
\* Can be extended with extension legs.



### ORIENT Bearing Puller Attachment

Attachment Code	Use with Hydraulic Unit	Reach 'A' Min. - Max.	Spread 'B' Maximum	Tapped Hole 'C'
OBP 10	OTC/10	10—110 mm	100 mm	5/8" UNF
OBP 20	OTC/20	15—215 mm	150 mm	5/8" UNF
OBP 30	OTC/30	20—250 mm	250 mm	1" UNF
OBP 50	OTC/50	50—325 mm	325 mm	1 1/4" NF
OBP 100	OTC/100/100—500 mm		625 mm	1 1/2" NF

Use with 2GP 10, OTC/10, 2GP 20, OTC/20, 2GP 30, OTC/30 or OTC/50



### ORIENT Bearing Cup Puller Attachments

Attachment Code	Use with Hydraulic Unit	Reach 'A' Min. - Max.	Spread 'B' Min. - Max.	Tapped Hole 'C'	Tapped Hole 'D'
OBC 10	OTC/10	100 mm	15—100 mm	5/8" UNF	1" BSW
OBC 20	OTC/20	130 mm	40—150 mm	5/8" UNF	1 1/4" BSW
OBC 30	OTC/30	150 mm	65—180 mm	1" UNF	1 1/2" BSW

\*\* Design and Specification are Subject to Alteration for Improvement without Notice