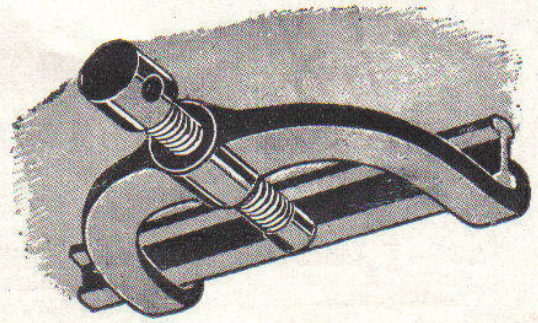


# 'Orient'

## HEAVY DUTY JIM CROW

### FOR RAIL BENDING



#### SPECIFICATIONS For Heavy Duty :

Capacity in Lbs	24	30	45	65	75	90	100	110	120	150
Screw Dia in mm	50	53	57	63	67	70	75	78	85	90
Span in mm	400	450	500	600	600	600	600	600	600	700

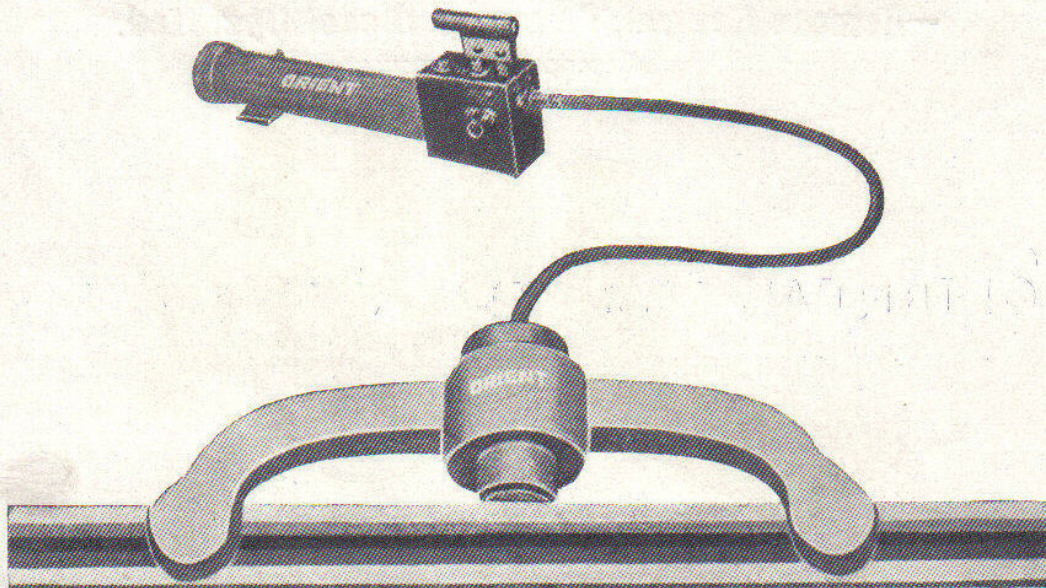
#### SPECIFICATIONS For Commercial Grade :

Capacity in Lbs	30	45	60	75	90	100	125	150
Screw Dia in mm	50	55	60	62	70	75	82	90
Span in mm	400	450	500	600	600	675	750	800

# 'Orient'

## HEAVY DUTY HYDRAULIC JIM CROW

### For 60 kgs. Rail



Span - 600 mm  
 Hydraulic Cylinder Capacity - 40 Tonnes  
 Hydraulic Stroke - 80 mm  
 Working Pressure - 510 Kg./Sq. Cm.  
 Total Weight - 104 Kgs. approx.